

SPARE PARTS

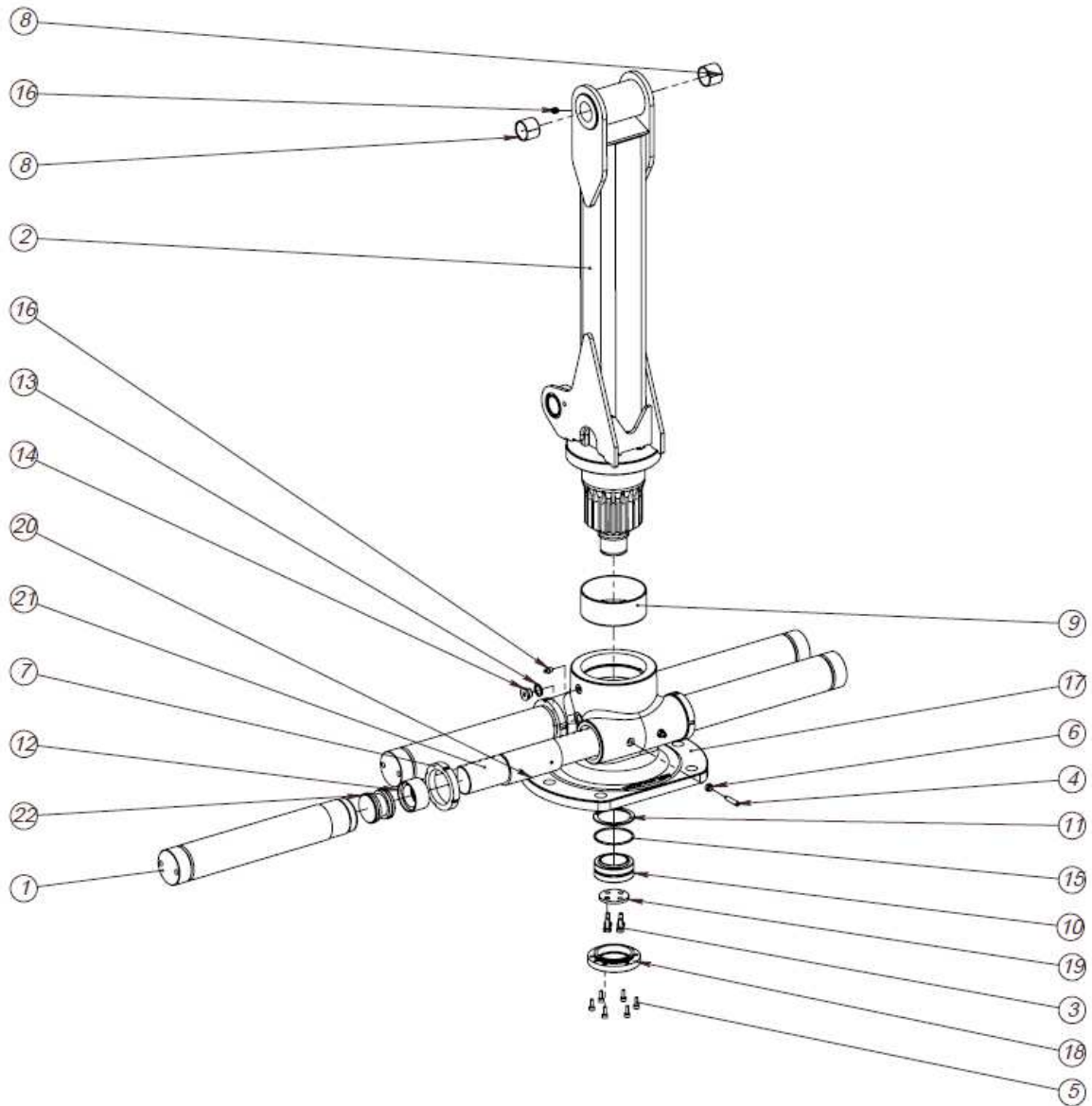
C3,5 G2/C3,8 G2/C4,2

TABLE OF CONTENTS

1	SPARE PARTS.....	2
1.1	TURNHOUSE.....	2
1.2	MAIN BOOM.....	4
1.3	OUTERBOOM C3,5 G2/C3,8 G2	6
1.4	OUTERBOOM C4,2.....	7
1.5	HYDRAULIC SCHEME C3,8 G2	9
1.6	HYDRAULIC SCHEME C4,2	12
2	TECHNICAL SPECIFICATIONS	15
2.1	MAIN PARTS & DIMENSIONS.....	15
2.2	TECHNICAL DATA.....	16
2.3	LIFTING DIAGRAMS	17
2.4	START UP GUIDE.....	18
3	EC-DECLARATION OF CONFORMITY (SAMPLE).....	20

1 SPARE PARTS

1.1 TURNHOUSE



REF: 140701

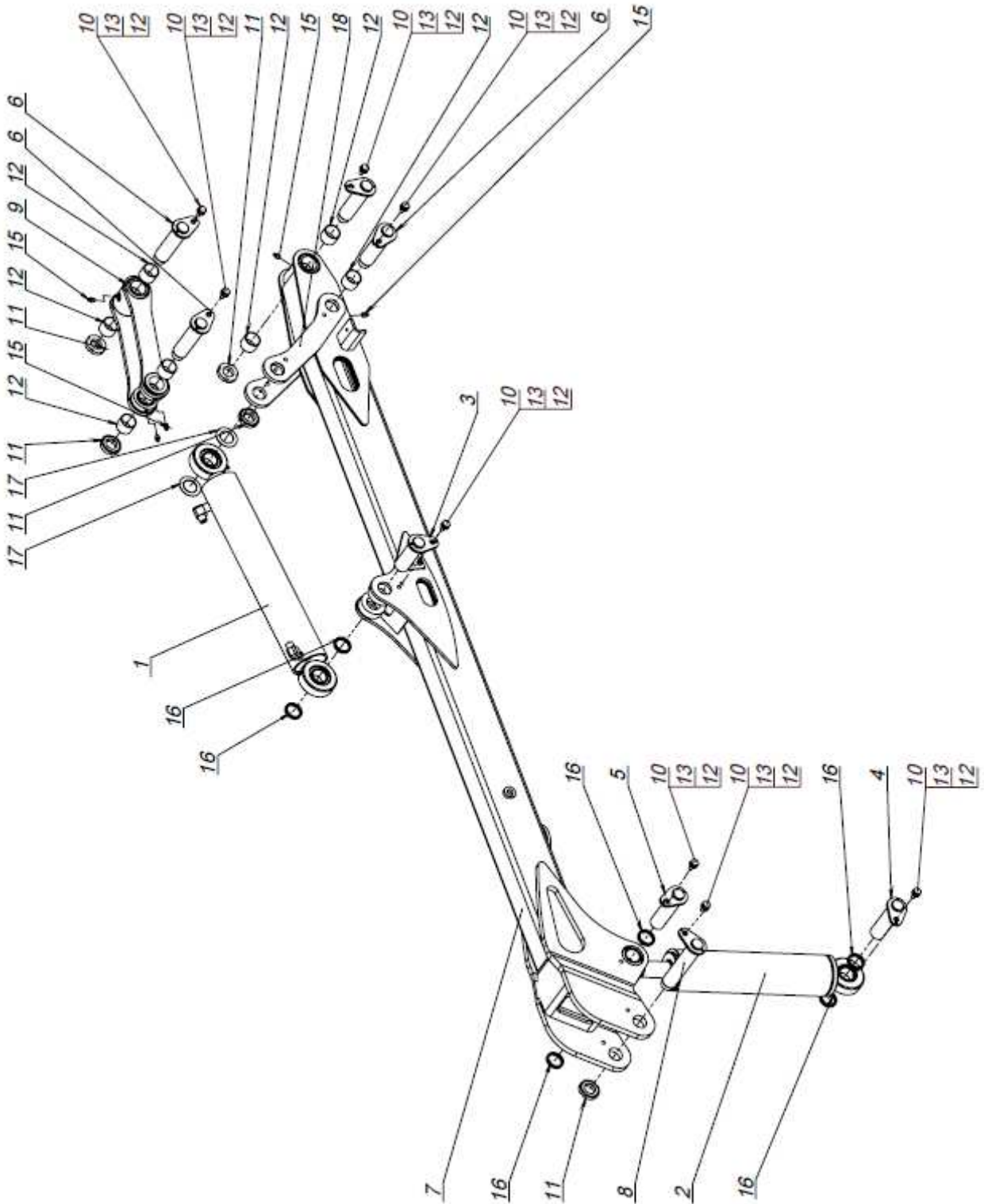
Turnhouse 5kNm

C3,5 G2/C3,8 G2/C4,2

ITEM NO.	PART NUMBER	DESCRIPTION	TYPE	QTY.
1	312400	Slewing cylinder	70/60 - 417	4
2	FMWS00494-02	Column C3.5/C3.8/C4.2 5kNm		1
3	906158	Bolt Hex. Cap	M8x20 fzb DIN 933	4
4	906263	Bolt Socket set	M8x40 DIN915	4
5	906501	Hex. Socket Screw	M6x16 DIN 912	6
6	907213	Nut Hex. Nylock	M8 fzb DIN 985	4
7	907554	Nut Lock/Round	M70x2 N DIN 1804	4
8	909145	Slide Bearing	35-39-30 P DIN 1494	2
9	909169	Slide Bearing	120-125-50 M DIN 1494	1
10	910325	Bearing	GE 50 ES	1
11	911135	Lock ring	DIN 472 75x2,5	1
12	912233	Simko sealing	60x44x18,4	4
13	914582	Rubber seal	5601-01-06	2
14	914794	Inset plug	G3/8" 7503-00-06	2
15	914823	O-ring	69,5x3	1
16	930105	Grease nipple	1/8" DIN 71412	3
17	FMWP03992	Body (Turnhouse 5 kNm)		1
18	FMWP03993	Cover	PLT20-Ø100	1
19	FMWP03994	Washer	PLT5-Ø56	1
20	FMWP03996	Slidepad 5kNm	PA6	2
21	FMWP03997	Rack M5 (5kNm)	GrndØ55h9 - 466	2
22	FMWP03998	Piston 60	RndØ60	4

REF: 140701

1.2 MAIN BOOM



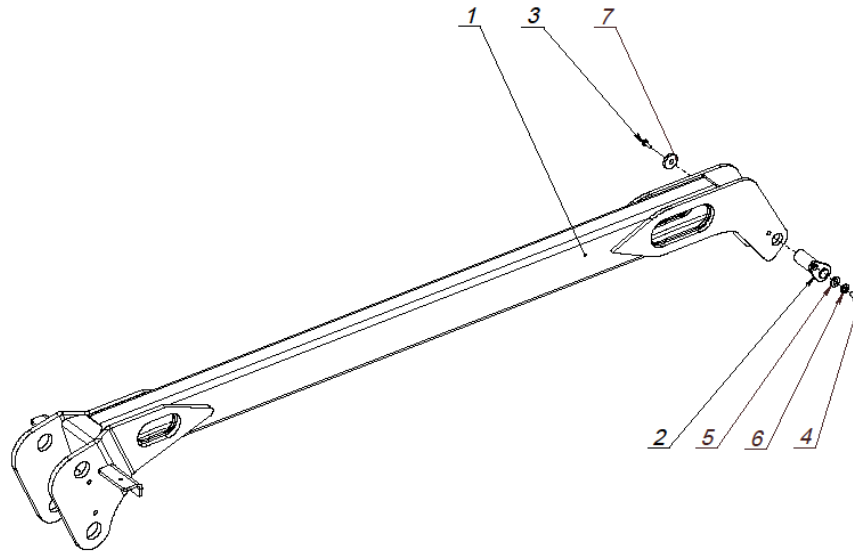
REF: 140701

Main boom

C3,5 G2/C3,8 G2/C4,2

ITEM NO.	PART NUMBER	DESCRIPTION	TYPE	QTY.
1	313129	Hydraulic cylinder	80/40 - 400	1
2	313134	Hydraulic cylinder	90/40 - 300	1
3	FMWS00360	Shaft	GRND35 - 109(98)	1
4	FMWS00360-01	Shaft	GRND35 - 129(118)	1
5	FMWS00360-02	Shaft	GRND35 - 135(124)	1
6	FMWS00364	Shaft	GRND35 - 146(120)	4
7	FMWS00496 or FMWS00496-01	Mainboom C3.8 G2/C4,2 or Mainboom C3.5 G2	-	1 1
8	FMWS00499	Shaft	GRND35 - 188(162)	1
9	FMWS00500	Link Inside C3,5 G2/C3,8 G2/ C4,2/C4,6 G2	-	1
10	906170	Bolt Hex. Cap	M10x20 fzb DIN 933	8
11	907550	Nut Lock/Round	M30x1,5 N DIN 1804	5
12	908225	Washer flat	M10 fzb DIN 125	8
13	908620	Washer Spring	M10 fzb DIN 127	8
14	909145	Slide bearing	35 39 30 DIN 1494	8
15	930105	Grease nipple	1/8" DIN 71412	5
16	FMWP00083	Ring	STØ42,3x3,4 - 7	6
17	FMWP01819	Washer	PLT1,5 - 55x55	4
18	FMWP02528	Link Outside C3,5 G2/ C3,8 G2/C4,2/C4,6 G2	PLT10 -340x80	2

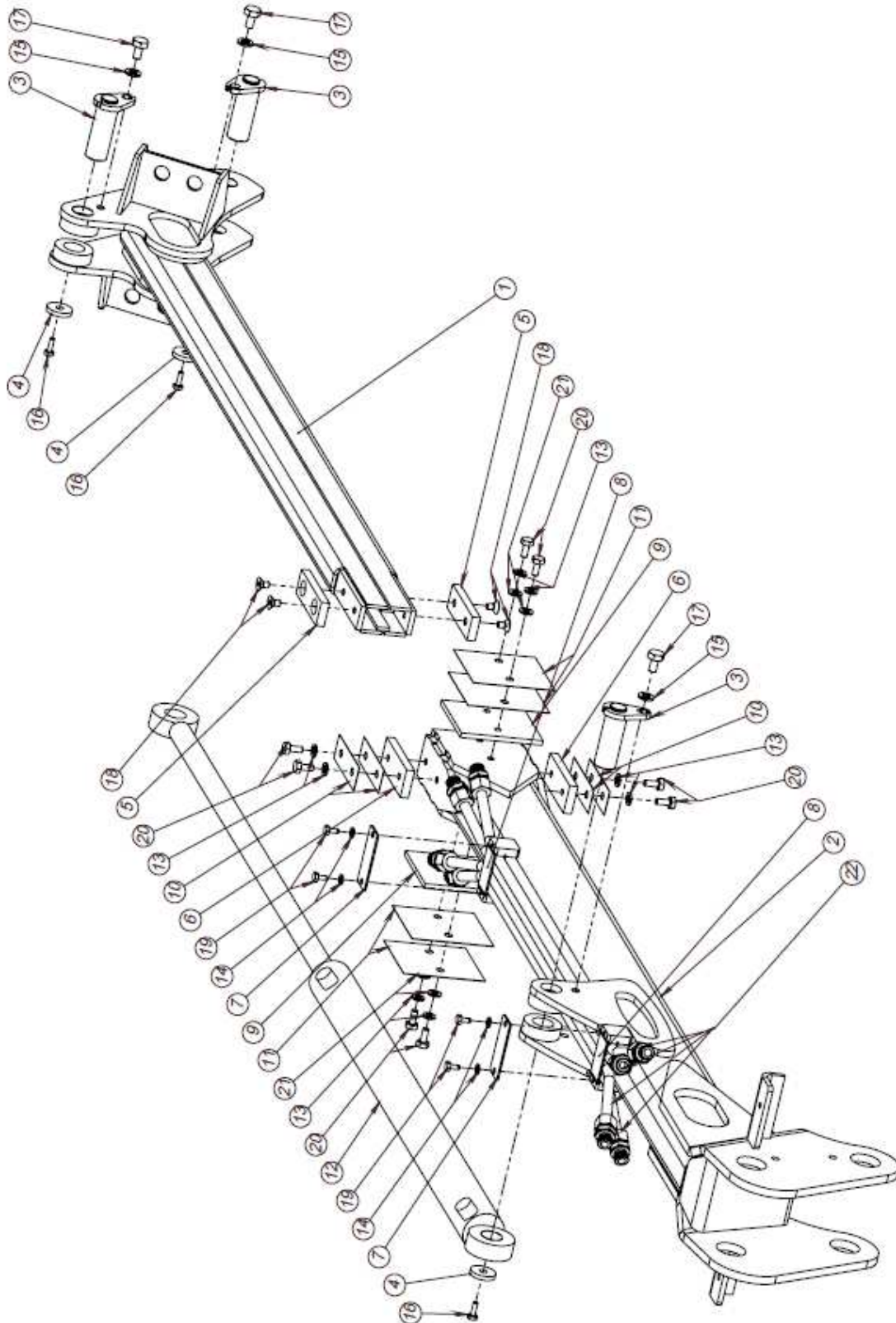
REF: 140701 /S1.2.1

1.3 OUTERBOOM C3,5 G2/C3,8 G2

REF: 140701
Outerboom C3,5 G2/C3,8 G2

ITEM NO.	PART NUMBER	DESCRIPTION	TYPE	QTY.
1	FMWS00495 or FMWS00495-01	Outerboom C3.8 G2 or Outerboom C3.5 G2	-	1 1
2	FMWS00591-03	Shaft	GrndØ25h9 - 75(66)	1
3	906140	Bolt Hex. Cap	M6x16 fzb DIN 933	1
4	906287	Bolt Hex. Cap	M10x16 DIN 933	1
5	908225	Washer flat	M10 fzb DIN 125	1
6	908620	Washer Spring	M10 fzb DIN 127	1
7	FMWP00519	Washer	PLT5 - D30	1

REF: 140701

1.4 OUTERBOOM C4,2



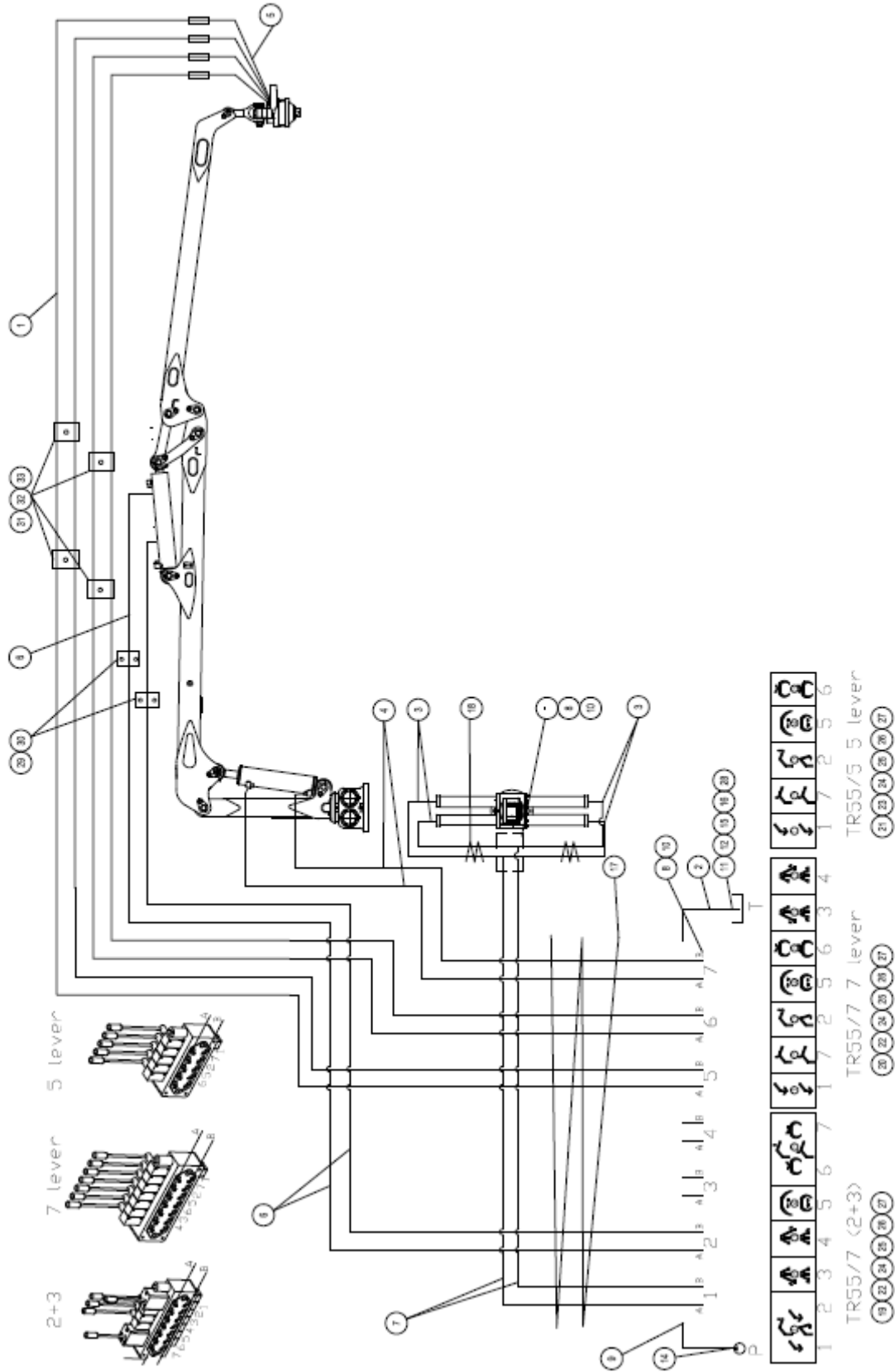
REF: 131203

Outerboom C4,2

ITEM NO.	PART NUMBER	DESCRIPTION	TYPE	QTY.
1	FMWS00706	Telescopic boom C4.2		1
2	FMWS00707	Outerboom C4.2	-	1
3	FMWS00591-03	Shaft	GrndØ25h9 - 75(66)	3
4	FMWP00519	Washer	PLT5 - D30	3
5	FMWP03967	Glide plastic	PLT10-90x30	2
6	FMWP03967-01	Glide plastic	PLT10-90x35	2
7	FMWP04017	Plate	PLT 2-72x30	2
8	FMWP04027	Pipe protecion	PLT2 - 55x30	4
9	FMWP04192	Glide plastic	PLT6-95x90	2
10	FMWP04195	Shim plate	PLT0,5-90x30	6
11	FMWP04195-01	Shim plate	PLT0,5-100x30	4
12	913225	Hydraulic cylinder	40/25-600	1
13	908615	Washer Spring	M8 fzb DIN 127	8
14	908610	Washer Spring	M6 fzb DIN 127	4
15	908620	Washer Spring	M10 fzb DIN 127	3
16	906140	Bolt Hex. Cap	M6x16 fzb DIN 933	3
17	906287	Bolt Hex. Cap	M10x16 DIN 933	3
18	906169	Bolt Hex. Socket	M8x12 fzb DIN 7991	4
19	906149	Hex. Screw	M6x12 DIN 933	4
20	906154	Bolt Hex. Cap	M8x16 DIN 933	8
21	908221	Washer flat	M8 fzb DIN125	4
22	FMWA00288	Hydraulic pipe ASM		4

REF: 131203 /S1.2.1

1.5 HYDRAULIC SCHEME C3,8 G2



REF: 141126

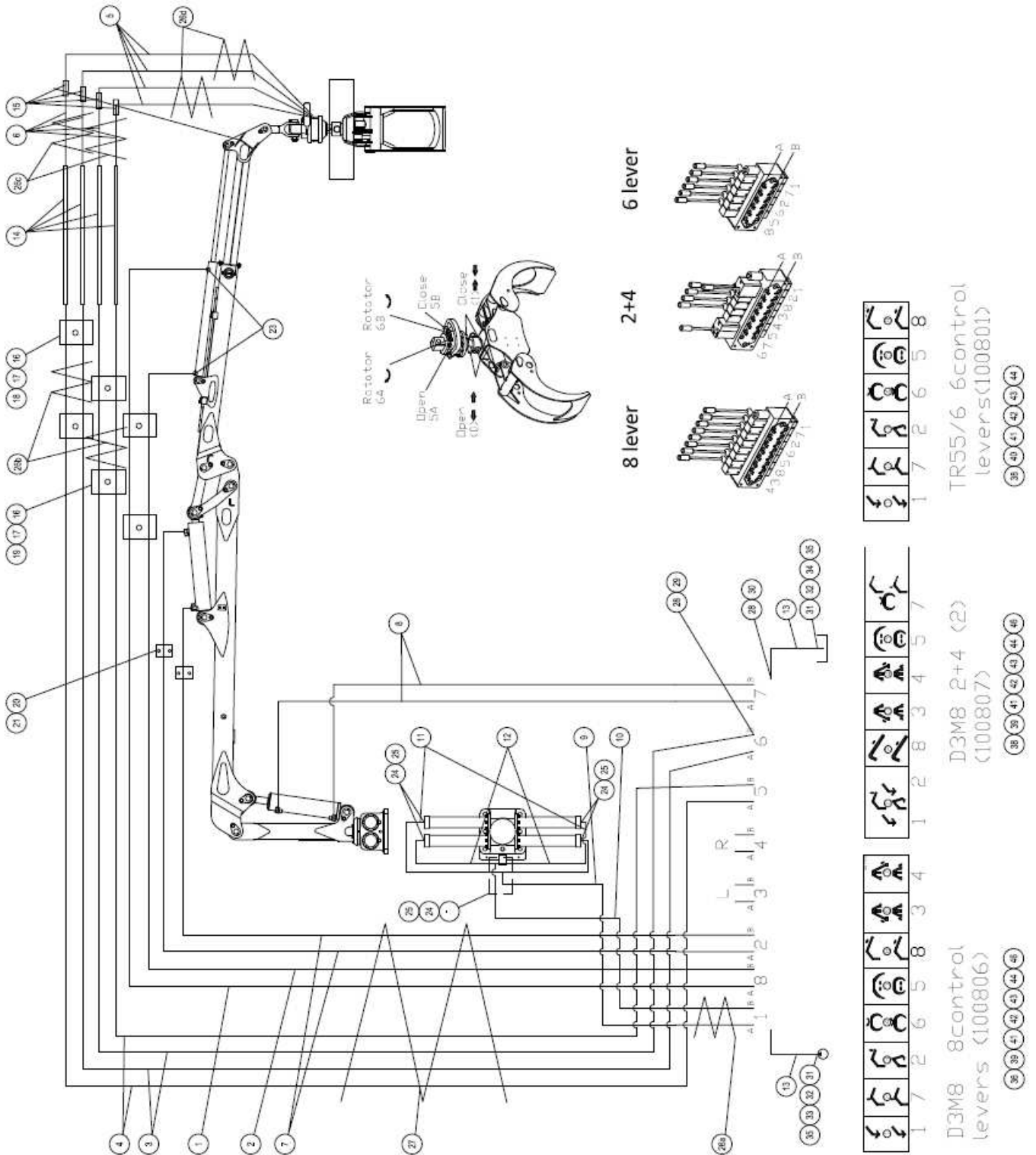
Hydraulic scheme C3,8 G2
 FMWH00007

POS. NO.	PART NO.	DESCRIPTION	TYPE	-01	-02	-03
				2+3 lev	7 lev	5 lev
1	FMWH00383	H-hose	42010404-1/4(6100)- 42020404	4	4	4
2	FMWH00384	H-hose	42010808- 1/2(1500)42020808	2	2	2
3	FMWH00385	H-hose	42010404-1/4(450)- 42030404	4	4	4
4	FMWH00386	H-hose	42010404-1/4(2550)- 42010604	2	2	2
5	FMWH00387	H-hose	42010404-1/4(900)- 42030406	4	4	4
6	FMWH00388	H-hose	42010404-1/4(4200)- 42010604	4	4	4
7	FMWH00389	H-hose	42010404-1/4(1600)- 42010406	2	2	2
8	914716	Straight nipple	7002-04-06	20	20	16
9	914718	Straight nipple	7002-06-08	2	2	2
10	914582	Rubber seal	5601-01-06	22	22	18
11	914584	Rubber seal	5601-01-08	2	2	2
12	914570	Bayonett male	5550-02-08 M 1/2"	2	2	2
-	-	-		-	-	-
14	925032	Lable No2 Pump Red		1	1	1
15	925034	Lable No3 Tank Blue		1	1	1
16	922227	Heat-shrink tubing	SRIF 25,4-12,7	90mm	90mm	90mm
17	930330	SPIRO PIPE	ø 50x3,5 mm yellow	3m	3m	3m
18	930320	SPIRO PIPE	ø 32x3 mm yellow	1m	1m	1m
19	925295	Label Op. scheme 2+3 handle	A1743	1	-	-
20	925305	Label Op. scheme 7 handle	A1745	-	1	-
21	925473	Lable Op. scheme 5 handle	A1798	-	-	1
22	FMWS00543	Valve bracket		1	1	-
23	FMWS00544	Valve bracket		-	-	1
24	909162	Bolt Hex. Cap	M8x60 DIN 931	3	3	3
25	907212	Nut Hex	M8 DIN 934	3	3	3

26	908221	Washer Flat	M8 DIN 125	6	6	6
27	908615	Washer Spring	M8 DIN 127	3	3	3
28	914579	Dust cover	5550-04-08; 1/2"F Black	2	2	2
29	914506	Clip single	5390-03-14; d14	2	2	2
30	906513	Bolt Hex. Socket	M6x25 DIN 912	4	4	4
31	914562	Clip double	5390-42-14; 2xd14	4	4	4
32	914546	Cover plate	5394-13-01; GR3	4	4	4
33	914520	Bolt Hex. Cap	M6x35 DIN 933	4	4	4
POS. NO.	PART NO.	DESCRIPTION	TYPE	2+3 lev	7 lev	5 lev
				-01	-02	-03

REF: 141126

1.6 HYDRAULIC SCHEME C4,2



TR55/6 6control levers(100801)
 1 7 2 6 5 8
 8 4 3 4 4 4

D3M8 2+4 (2) (100807)
 1 2 8 3 4 5 7
 8 3 4 2 4 4 4

D3M8 8control levers (100806)
 1 7 2 6 5 8
 8 3 4 4 3 4 4

8 section valve

REF:141126

Hydraulic scheme C4,2
 FMWH00024

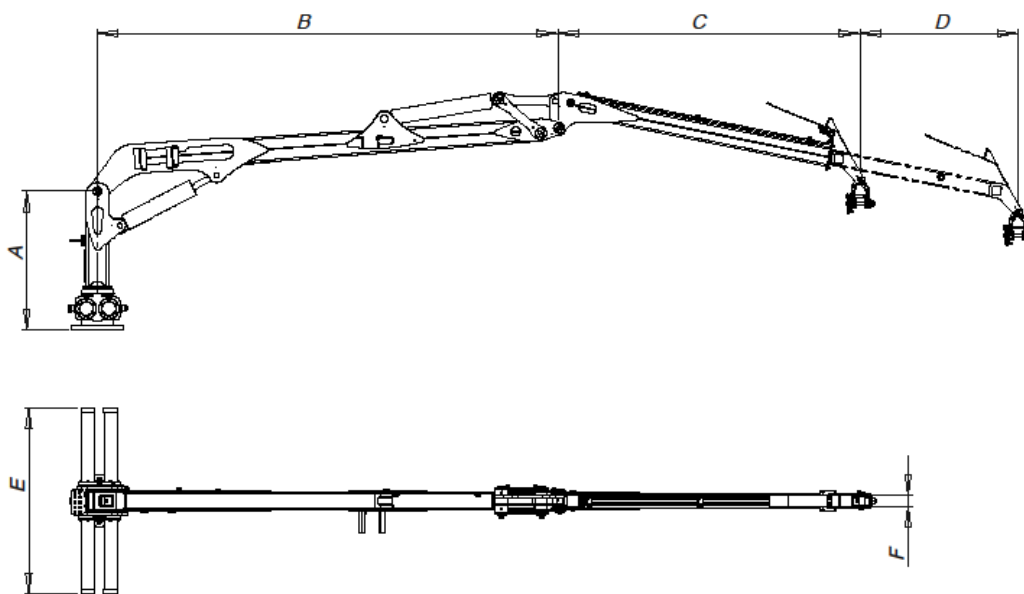
POS. NO.	PART NO.	DESCRIPTION	TYPE	-01	-02	-03
				8 lev	2+4 lev	6 lev
1	FMWH00421	H-hose	42010404-1/4(5880)-42010404	1	1	1
2	FMWH00422	H-hose	42010404-1/4(5280)-42010404	1	1	1
3	FMWH00423	H-hose	42010404-1/4(5100)-42010604	2	2	2
4	FMWH00424	H-hose	42010404-1/4(5100)-42040604	2	2	2
5	FMWH00404	H-hose	42010604-1/4(700)-42030604	4	4	4
6	FMWH00406	H-hose	42010604-1/4(920)-42010604	4	4	4
7	FMWH00425	H-hose	42040404-1/4(4200)-42010604	2	2	2
8	FMWH00426	H-hose	42010404-1/4(2550)-42040604	2	2	2
9	FMWH00411	H-hose	42040404-1/4(1100)-42010404	1	1	1
10	FMWH00412	H-hose	42050404-1/4(1100)-42010404	1	1	1
11	FMWH00413	H-hose	42050404-1/4(570)-42010404	2	2	2
12	FMWH00414	H-hose	42040404-1/4(570)-42010404	2	2	2
13	FMWH00384	H-hose	42010808-1/2(1500)42020808	2	2	2
14	FMWA00288	Pipe ASM		4	4	4
15	914750	Cartridge nipple	7090-06-06; G3/8"Mx3/8"M	4	4	4
16	914562	Clip double	5390-42-14; 2xd14	6	6	6
17	914546	Cover plate	5394-13-01; GR3	4	4	4
18	914520	Bolt Hex. Cap	M8x35 DIN 933	2	2	2
19	9061417	Bolt Hex. Cap	M8x60DIN 931	2	2	2
20	914506	Clip single	5390-03-14; d14	2	2	2
21	906513	Bolt Hex. Socket	M6x25 DIN 912	4	4	4
-	-	-	-	-	-	-
23	914764	Angle nipple	7210-04-04; G1/4"MxR1/4"M	2	2	2
24	914582	Rubber seal	5601-01-06; G3/8"	10	10	24
25	914712	Straight nipple	7002-04-06; G3/8"xG1/4"	10	10	22
26	930320	SPIRO PIPE	ø 32x3 mm yellow	5m	5m	5m
26a	930320	SPIRO PIPE	ø 32x3 mm yellow	0,3m	0,3m	0,3m
26b	930320	SPIRO PIPE	ø 32x3 mm yellow	0,6m	0,6m	0,6m

26c	930320	SPIRO PIPE	∅ 32x3 mm yellow	0,9m	0,9m	0,9m
26d	930320	SPIRO PIPE	∅ 32x3 mm yellow	0,7m	0,7m	0,7m
27	930330	SPIRO PIPE	∅ 50x3,5 mm yellow	1,5m	1,5m	1,5m
28	914584	Rubber seal	5601-01-08; G1/2"	18	18	-
29	914714	Straight nipple	7002-04-08; G1/2"xG1/4"	16	16	-
30	914720	Straight nipple	7002-08-08; G1/2"xG1/2"	2	2	-
31	914570	Bayonett male	5550-02-08 M 1/2"	2	2	2
32	914579	Dust cover	5550-04-08; 1/2"F Black	2	2	2
33	925032	Lable No2 Pump Red		1	1	1
34	925034	Lable No3 Tank Blue		1	1	1
35	922227	Heat-shrink tubing	SRIF 25,4-12,7	90mm	90mm	90mm
36	925474	Label Op. scheme	A1799	1	-	-
37	925300	Label Op. scheme	A1744	-	-	1
38	925472	Lable Op. Scheme	A1797	-	1	-
39	FMWS00540	Valve bracket		1	1	-
40	FMWS00544	Valve bracket		-	-	1
41	909162	Bolt Hex. Cap	M8x60 DIN 931	3	-	3
42	907212	Nut Hex	M8 DIN 934	3	3	3
43	908221	Washer Flat	M8 DIN 125	6	6	6
44	908615	Washer Spring	M8 DIN 127	3	3	3
45	914718	Straight nipple	7002-06-08; G3/8"xG1/4"	-	-	2
46	906163	Bolt Hex. Cap	M8x30 DIN 933	3	3	-
POS. NO.	PART NO.	DESCRIPTION	TYPE	8 lev	2+4 lev	6 lev
				-01	-02	-03

REF: 141126

2 TECHNICAL SPECIFICATIONS

2.1 MAIN PARTS & DIMENSIONS



Picture: Boom system with boom extension

ITEM	DESCRIPTION
A	Turnhouse
B	Main boom
C	Outerboom
D	Telescopic boom extension

DIMENSIONS (mm)			
ITEM	C3,5 G2	C3,8 G2	C4,2
A	956	956	956
B	2051	2200	2200
C	1493	1650	1410
D	-	-	595
E	955	955	955
F	50	50	50

REF: 140701

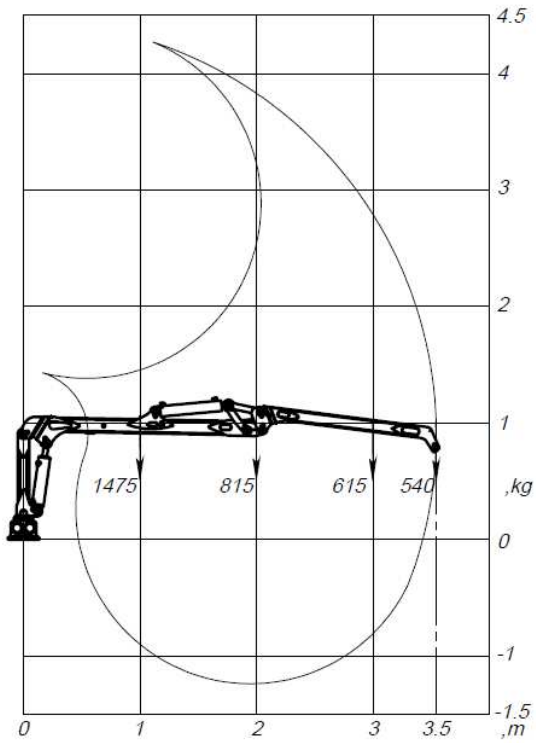
2.2 TECHNICAL DATA

FOREST CRANE	C3,5 G2	C3,8 G2	C4,2
Lifting capacity net, kNm	19	18	18
Slewing torque, kNm	3	3	3
Slewing angle, °	360	360	360
Reach, m	3,5	3,8	4,2
Telescopic stroke length, m	-	-	0,6
Recommended flow, l/min	10-35	10-35	10-35
Working pressure, bar	175	175	175
Weight of loader, kg • excl. Grapple, rotator, link	277	284	308
Weight, kg incl. FG 0.12, rotator,link	348	355	379
Weight, kg incl. FG 0.16, rotator,link	-	376	400
Lifting force kg/max reach • excl. Grapple, rotator, link	540	475	430

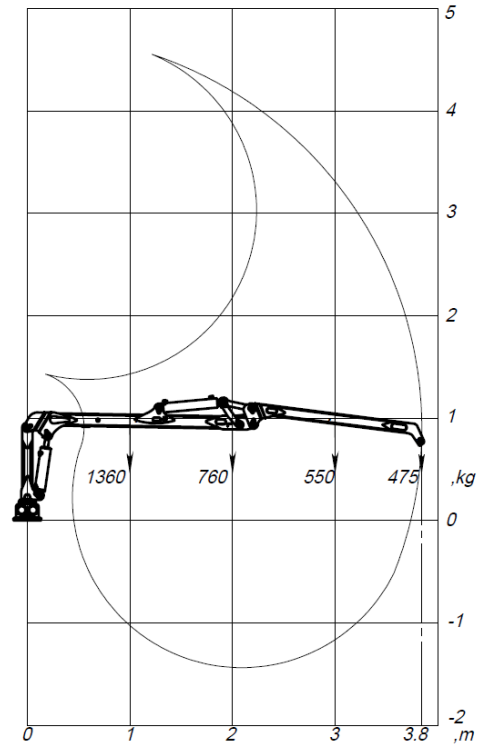
REF: 150305

2.3 LIFTING DIAGRAMS

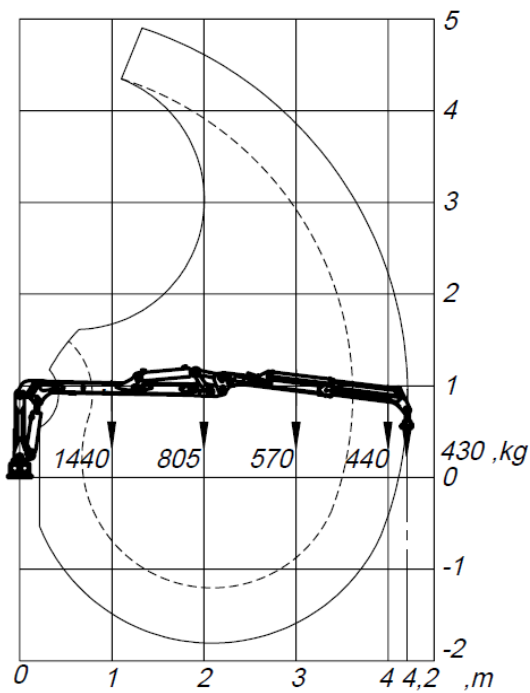
C3,5 G2



C3,8 G2



C4,2



2.4 START UP GUIDE

START UP GUIDE

IMPORTANT INFORMATION - MACHINE START UP

Connecting electrical and hydraulic equipment

Electrical cables

Electrical cables must be connected directly to the battery through a fuse. [amp of fuse, lights, el-on-off, remote control?]

Cable marking		
+	Brown cable	Number 1
Earth (ground)	Blue cable	Number 2

Hydraulic connetions

Note! Always protect your eyes and skin from oil when connecting and disconnecting! Avoid oil spill! Make sure connections are well attached.

The hydraulic **return connection hose** should preferably be connected to a separate return tank. Avoid operating through a double acting outlet.

Hose marking		
Blue	Return from machine	Connect first!
Blue	Free flow return - directly to tank *	Not standard on all machines
Red	Pressure/oil to machine	Connect secondly!
Yellow	Trailer brake hose	Not standard on all machines
White	Load sensing hose	Not standard on all machines

*labeled with special sticker

ATTENTION! ACHTUNG! ATENCIÓN! VARNING!

Must be connected to **free flow** tank hose connection on tractor!
 Freier Rücklauf muss direkt zum Tank vom Traktor angeschlossen werden!
 Le retour libre doit être branché directement au réservoir du tracteur!
 Måste anslutas till fri tank retur på traktor!



Free flow return means the hose should be connected **directly** into the tank of the tractor or a stand alone tank. **Always connect this hose first before use and disconnect last after use!**

Daily operation start up.

1. Check and if required grease bogie axles, crane links, support legs and cylinder links.
2. Make sure there is oil in the cranes turn house.
3. Make sure the wheel bolts are tightened. In heavy duty use they can become lose.
4. Look for leaks and play in axles and joints.
5. Check that your draw eyelet is not worn down.
6. Make sure your running lights are working.
7. On a regular basic, make sure you take time to follow the maintenance schedule in the instruction book
8. Enjoy your day!

Always connect hoses in the following order:

1. Free flow return or other return hose

2. Pressure hose

Always disconnect hoses in the following order:

1. Pressure hose

2. Free flow return or other return hose

3 EC-DECLARATION OF CONFORMITY (SAMPLE)***EC Declaration of Conformity of the Machinery***

Manufacturer:

Fors MW AS

Tule 30

76505 Saue

Estonia

The technical file is compiled by **Peter Kastberg**;

I hereby confirm that this equipment, **FARMA forestry crane C3,8 G2**:

Trade mark: **FARMA**

Function: **Forestry crane**

Model: **C3,8 G2**

Type: **FL** variant: **C3,8** version: **G2**

Serial no.: **FL0038xxxxxxxx**

Trade name: **FARMA C3,8 G2**

- Type: **FG** variant: **0.xx**
Serial no.: **FG00xxxxxxxx**

Manufacture year: **xxxx**

is manufactured accordingly to demands in **directive 2006/42/EC** and therefore can be used mounted together with other equipment to provide a complete machine.

The equipment can't be used before the machine or the formation that it will take place in, is accordingly to the demands of the EC Machinery Directive.

For the guarantee and safety, it is of uttermost significance that the instruction book is read before the machine is put into service.



Peter Kastberg
CEO

Saue, Estonia

2015-05-22